

ELECTRONIC HAND TALLY COUNTER

Instruction Manual

DK-2300

Thank you for purchasing our Pocket Counter DK-2300. Please read this instruction manual carefully before using to ensure the correct usage of this device. Please keep this instruction manual for future reference.

ATTENTION

Please note that misuse of this device may lead to injury to the user or damage to the device. Please observe all safety precautions and warnings in this instruction manual.

Customer Service

LINE SEIKI CO., LTD.

Address : 37-7 Chuo-cho, 2-Chome
Meguro-ku, Tokyo 152-0001 Japan

Contact : Tel: +81-3-37165151 Fax: +81-3-37104552
E-mail : webtrade@line.co.jp
Web : http://www.lineseiki.com

Safety Precautions

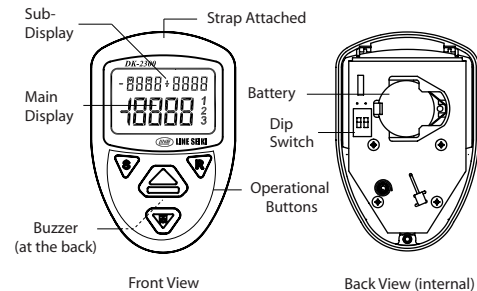
For safe usage of this device, please observe all statements regarding precautions and warnings in this instruction manual.

ATTENTION

Operation

- Do not use this device near machines that emit strong electromagnetic fields or objects that store static electricity.
- Do not drop or subject this device to strong impact.
- Do not use or store this device where it will be exposed to water or in places with wet conditions.
- Do not use or store this device where it can be exposed to direct sunlight, dust, high temperature and high humidity.
- See the battery case markings to ensure that the battery is properly installed.
- Remove the battery when the device will not be used for a long period of time.
- Do not attempt to disassemble or modify this device.
- The unit is shipped with protective seal on the Display.

1. Labels



2. Specifications

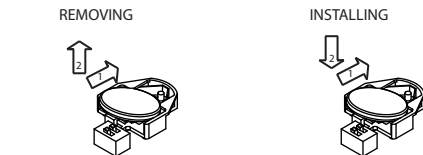
Model	DK-2300
Display	Main Display: 7 Segment LCD 4.5 Digits 10mm(H) Sub-Display : 7 Segment LCD 4 Digits 5mm(H)
No. of Digits	Main Display : -9999 ~ 19999 Sub-Display : -9999 ~ 9999
Power Source	3V Battery CR2032, approx. 1.5 years*
Operating Temp./ Humidity	5°C ~ +40°C / 85% RH (non-condensing)
Storage Temp.	-10°C ~ +60°C
Approvals	CE compliant
Weight	approx. 40g (batt. included)

*Take note that the unit is shipped with a battery installed and battery life may be shorter than the indicated specification. However, if a new battery is installed, battery life will be according to indicated specification.

3. Battery Replacement

When the display becomes faint or disappears, it indicates a low battery condition. Replace the battery when this occurs.

1. Remove the screw at the lower back of the unit and remove the back cover by lifting it.
2. Slide the battery from the left side to the right (1) and lift the battery from the battery holder (2). (See "removing" diagram below)
3. To install a new battery, insert the battery from left to right (1) and push down the battery until it locks on the battery holder (2). (See "installing" diagram below)



Warning!!!

This counter does not have a memory. All stored data will be erased when battery becomes low or changed.

4. Operating Procedure

The DK-2300 is an electronic hand tally counter with 4 selectable types in a single unit. This is possible by configuring the DIP switch setting according to the desired type.

DIP Switch Setting

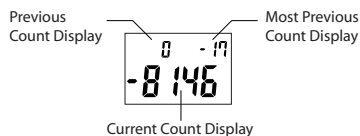
To change from one type to another, remove the battery first before changing the DIP Switch setting.

TYPES	SWITCH 1	SWITCH 2
Type 1 Up/Down Counter	ON	ON
Type 2 2 Counter Tally	ON	OFF
Type 3 3 Up/Down Counters	OFF	ON
Type 4 Counter with Memory	OFF	OFF

Type 1 : Up / Down Counter

Type 1 is a simple Up/Down counter which can temporarily display previous count values.

Sample Display:



Button Labels:

TYPE				
Type 1 Up/Down Counter	Up	Down	Reset	No Function

Count Operation

In this type, the user can Count Up or Count Down using the Up button and Down button, respectively. This unit can count from -9999 to 9999. If the count value reaches the maximum or minimum count value, continuous pressing of the Up or Down button will show an Error display. The current count value is shown on the Main Display.

Reset Operation

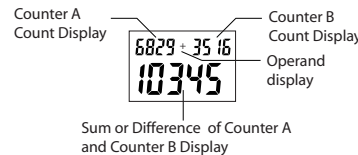
This type can store temporarily up to the 2 most recent count values. The count value displayed on the Main display can be stored temporarily by pressing the Reset button. The most recent count value is displayed on the upper left Sub-Display. Each press of the Reset button will move the count value displayed from the upper left sub-display to the upper right sub-display and the count value on the Main display will be reset to zero. The count value displayed on the upper right sub-display will be deleted each time the Reset button is pressed.

Buzzer

The unit has a built in buzzer that can be enabled or disabled by pressing and holding the Reset button.

Type 2 : Two Counter Tally Sum or Difference

Type 2 is a two tally counter which can compute its sum or difference. Sample Display:



Button Labels:

TYPE				
Type 2 2 Counter Tally	UP (Counter A)	UP (Counter B)	Reset	Select (+/-)

Count Operation

In this type, the user has 2 individual counters, A and B. Counters A and B are shown on the upper left and upper right of the Sub-Display, respectively. Both counters can only count up from 0 to 9999. To count up Counter A, press the UP (Counter A) button. To count up Counter B, press the UP (Counter B) button. If count value exceeds the count range, an error message will be displayed.

Sum or Difference of Counters A and B

This type can perform an Addition or Subtraction of the two counters. To choose the desired operand, press the Select (+/-) button. The active operand will be shown in the Sub-Display. The resulting value from the chosen operation will be shown in the Main display. The display range of the Main Display is -9999 to 19998. You can shift from Sum or Difference anytime and the resulting value will display automatically.

Reset Operation

To reset the count value of both Counters A and B, press the Reset button. Take note that it is not possible to reset only one of the counters.

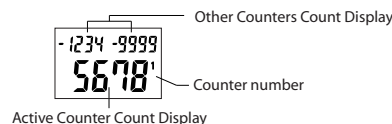
Buzzer

The unit has a built in buzzer that can be enabled or disabled by pressing and holding the Reset button.

Type 3 : Three Up / Down Counters

Type 3 is a three independent tally counters in one single unit.

Sample Display:



Button Labels:

TYPE				
Type 3 3 Up/Down Counter	Up	Down	Reset	Shift

The active counter is the one shown in the Main Display. It is identified by the numbers on the right side of the main display. To shift from one counter to another, press the Shift button. The counter's display shifts in a clockwise manner.

Count Operation

In this type, the user can Count Up or Count Down using the Up button and Down button, respectively, for the displayed active counter, from -9999 to 9999. The other two counters are shown on the Sub-Display and cannot be affected by the counting operation. If the count value reaches the maximum or minimum count value, continuous pressing of the Up or Down button will show an Error display.

Reset Operation

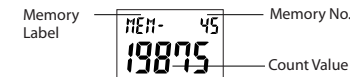
To reset a particular counter, it must be the active counter, displayed on the Main Display. To reset a particular counter, press the Reset button.

Buzzer

The unit has a built in buzzer that can be enabled or disabled by pressing and holding the Reset button.

Type 4 : Counter with Memory

Type 4 is an Up counter with Memory feature. Sample Display:



Button Labels:

TYPE				
Type 4 Counter with Memory	Up	MEM	Reset	Shift
	Scroll Up	Scroll Down		

This type has 2 modes, Count Mode and Memory Mode. In Count Mode, the counting operation is done. In Memory Mode, the stored values are recalled and viewed. To go from one mode to another, press the Shift button.

Count Mode

The counter is shown on the Main display. To count up, press the Up button. The counter can count from 0 to 19999 and if the count value reaches the maximum count value, continuous pressing of the Up button will show an Error display.

To store the displayed count value in memory, press the MEM button. This will increment the MEM label by one. The maximum Mem No. is 59, continuous pressing of the MEM button will display a MEM-FULL and the current count value cannot be stored. However, the 59 memories remains stored.

To reset the counter, press the Reset button. When reset is performed, the count value is reset to "0" but the stored values in memory remains.

Memory Mode

Upon shifting to Memory Mode, the MEM label and no. will blink and the last stored MEM No. is displayed on the Sub-Display and it's corresponding count value shown on the Main Display. The user can scroll through the stored values, indicated by its MEM No., by pressing the Scroll Up or Scroll Down buttons.

To erase the stored values, press the Reset and Scroll Down buttons at the same time. This will delete all the stored values and the last count value in Count Mode. The main display will show dashed line and the MEM No. resets to "0". Erasing of individual MEM No. is not possible.

Buzzer

The unit has a built in buzzer that can be enabled or disabled by pressing and holding the Reset button while in Count Mode.